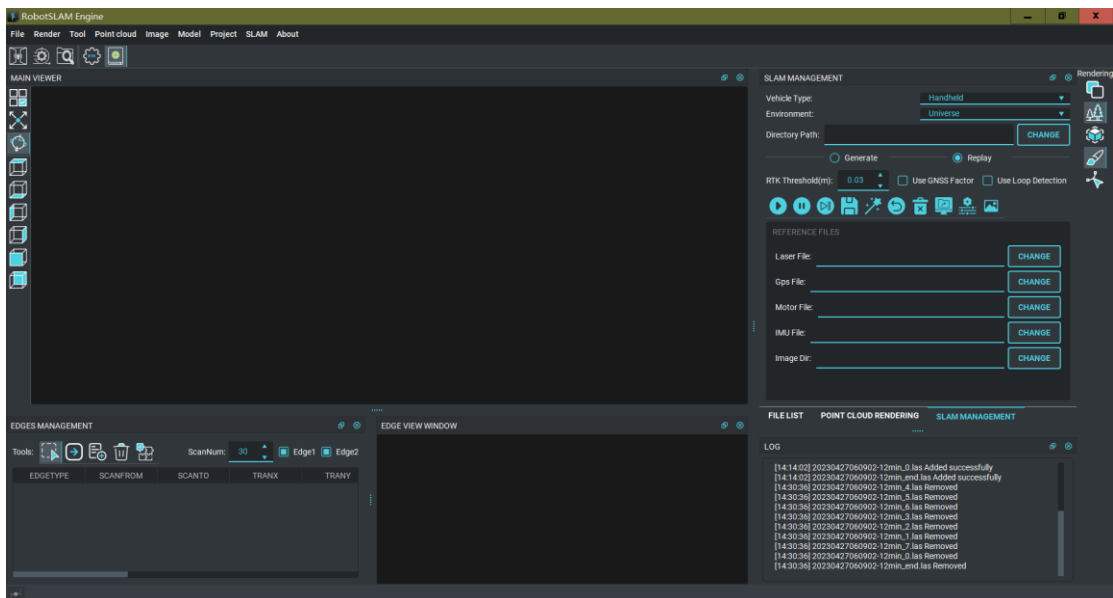
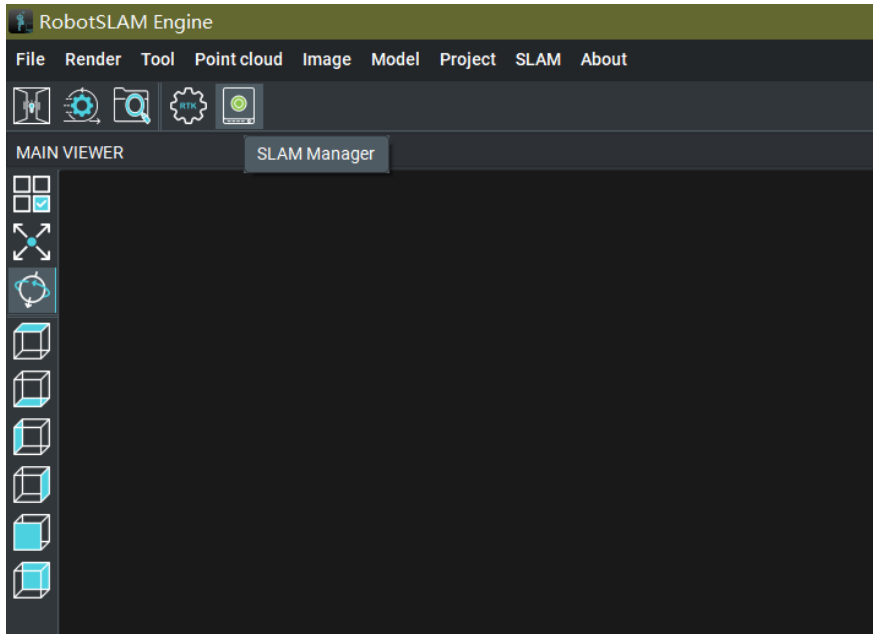
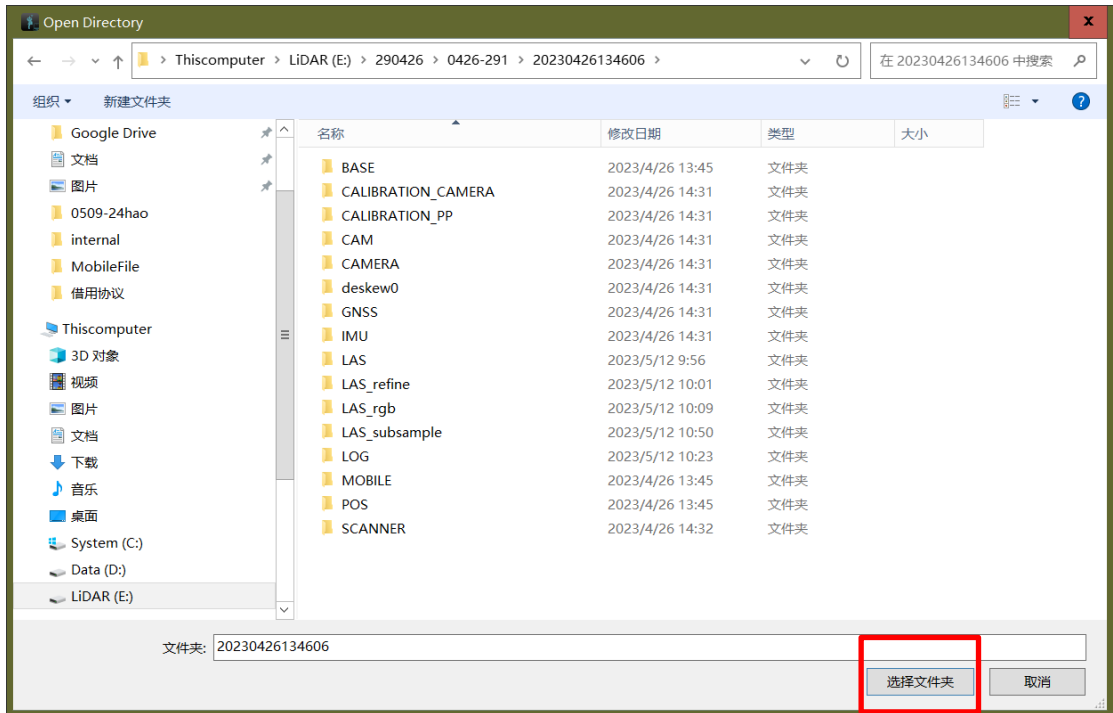
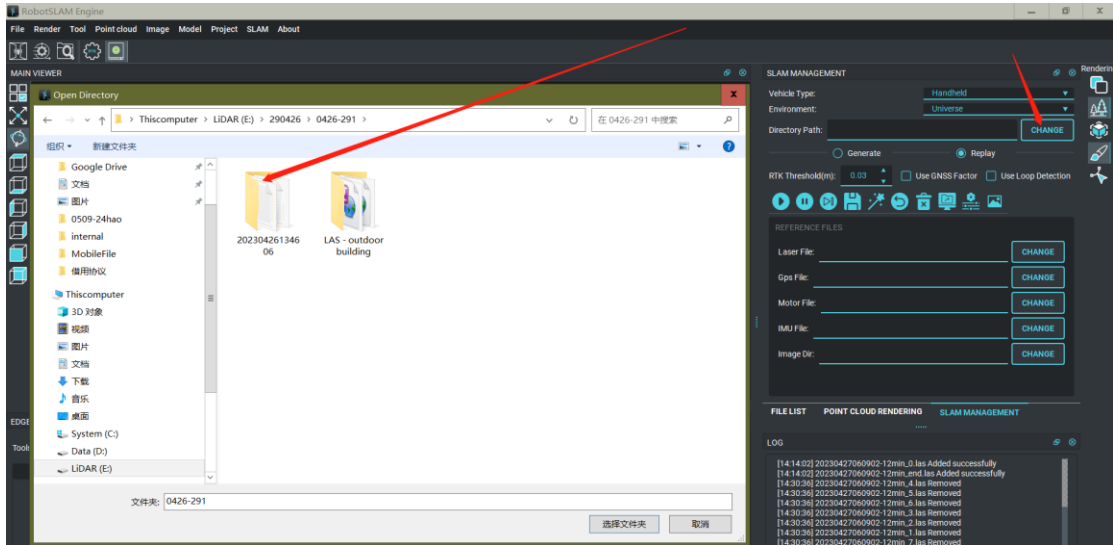


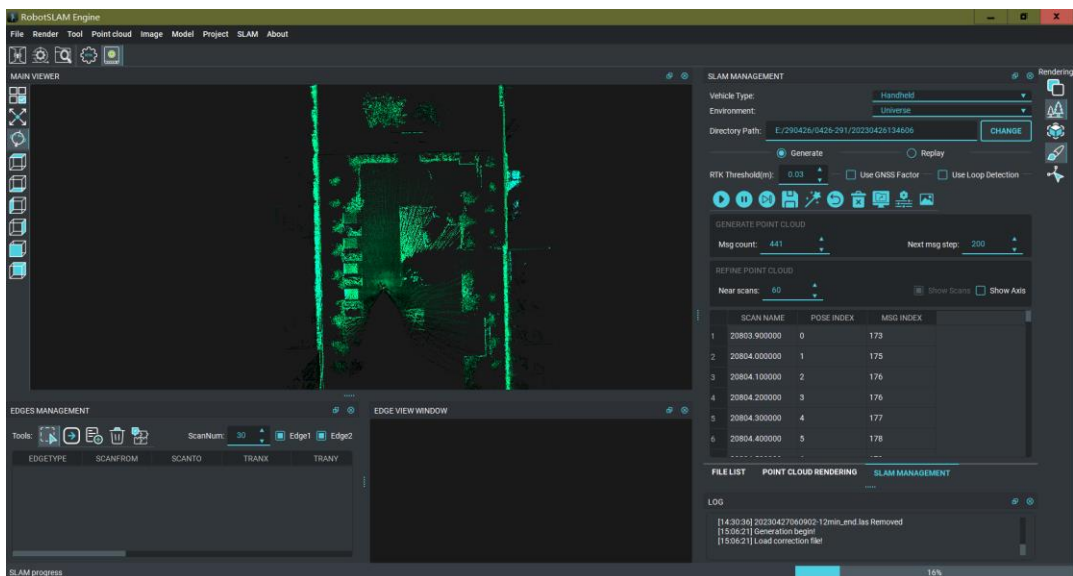
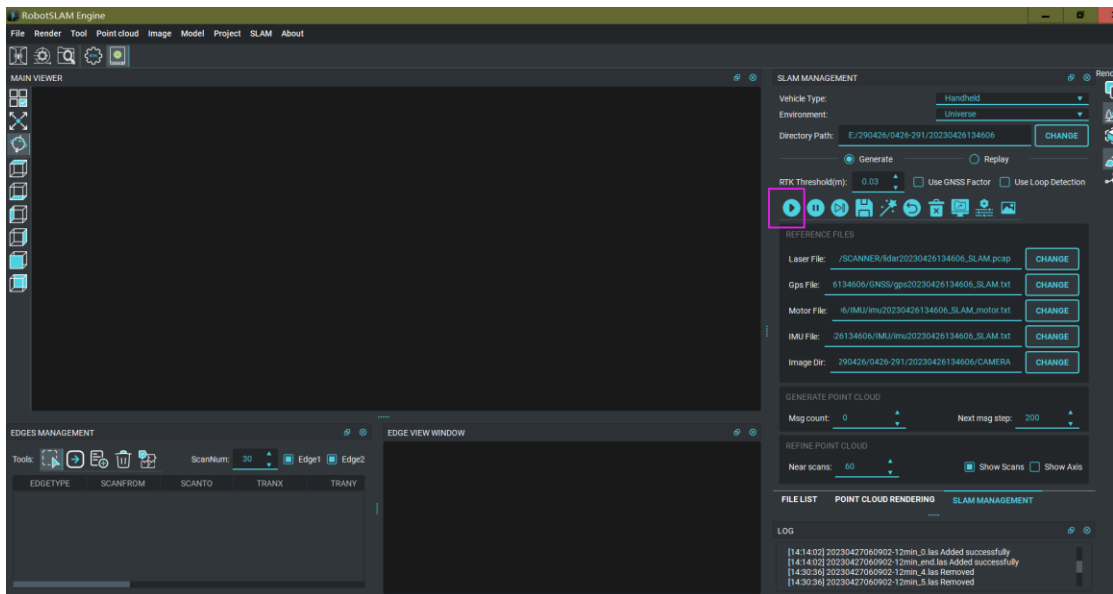


1. Double click to run RobotSLAM software
2. Open SLAM Manager

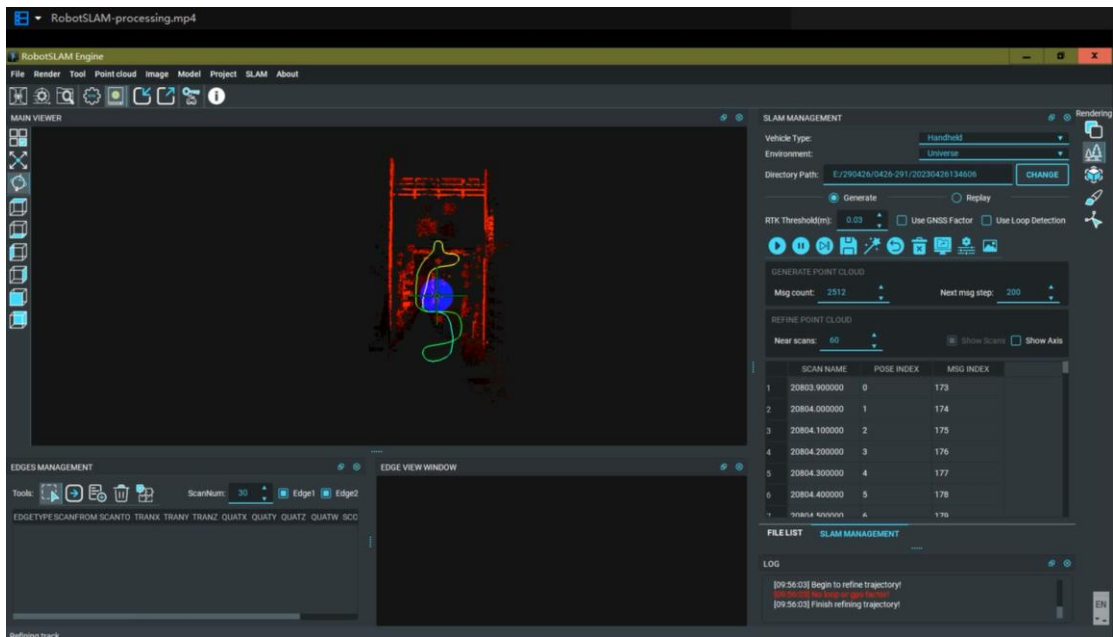




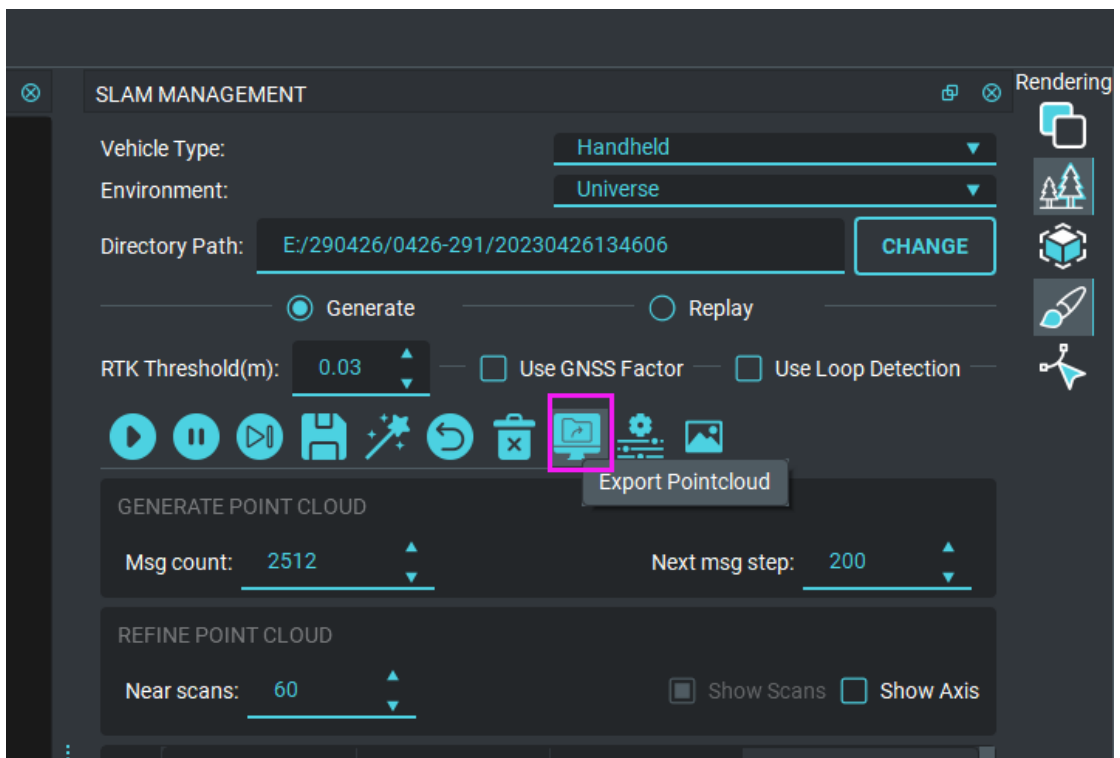
3. Click the button to Run "Bag file"



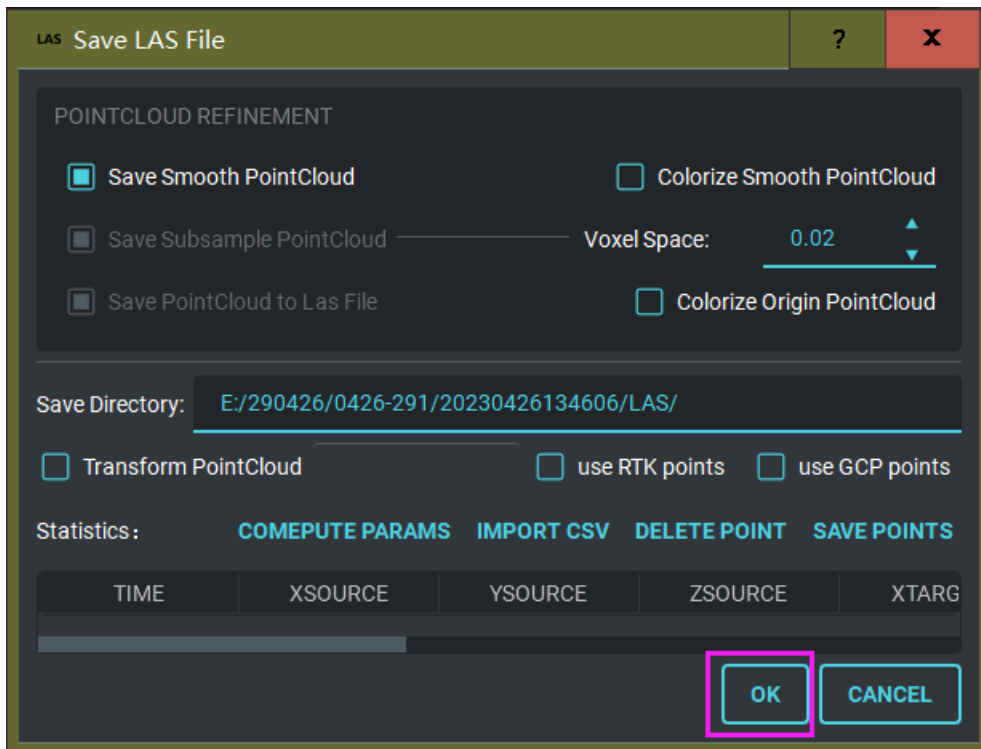
4. Wait for the processing, when the process bar reach 100%, and shows" Finish refining trajectory", the processing **finish**.



5. **Export point cloud** by clicking the following icon:



Click "OK" to export point cloud:



If the data also collect video with the pano camera, check "Colorize Smooth Pointcloud" or "Colorize Origin Pointcloud" to export the point cloud, and then click OK.

